

# This Love

Musik og tekst: A. Levin, J. Carmichael,  
R. Dusick, M. Madden, J. Valentine  
Arr: Christian Vardinghus-Nielsen, 2007

## El-guitar

Intro (A) G7/b Cm Fm7

D° (B) (C)

## Orgel/Strings

(C) Fm7 EbΔ B° Cm7 Fm7 EbΔ G7

Intro (A) (B)

Tamburin

Musik og tekst: Copyright © Valentine Valentine/  
BMG Songs Inc/February Twenty Second Music/  
Careers-BMG Music Publishing Inc/BMG Music  
Publishing Scandinavia AB

## Form

Intro (A) vers 1 (B) omkvæd (A) vers 2 (B) omkvæd (C)  
(B) omkvæd (B) omkvæd (B) omkvæd (B) omkvæd Outro

# This Love

Klaver

Intro

G7/b Cm Fm7

D° (A) G7/b Cm

Fm7 D° G7/b

Cm Fm7 D°

(B) % Cm7 Fm7 B<sup>b</sup> E<sup>b</sup> B<sup>b</sup>/d Cm7 Fm7 B<sup>b</sup> E<sup>b</sup> B<sup>b</sup>/d

Cm7 Fm7 B<sup>b</sup> E<sup>b</sup> B<sup>b</sup>/d Cm7 F7 1. + 2. A<sup>b</sup> G7

The piano score for 'This Love' is written in 4/4 time with a key signature of two flats (B-flat and E-flat). The score is divided into six systems, each with a treble and bass staff joined by a brace. The first system begins with an 'Intro' section. The second system contains a first ending marked with a circled 'A'. The third system contains a second ending marked with a circled 'B' and a repeat sign. The fourth system contains a third ending marked with '1. + 2.'. The fifth and sixth systems continue the main body of the piece. Chord symbols are placed above the corresponding measures: G7/b, Cm, Fm7, D°, (A) G7/b, Cm, Fm7, D°, G7/b, Cm, Fm7, D°, Cm7, Fm7, B<sup>b</sup>, E<sup>b</sup>, B<sup>b</sup>/d, Cm7, Fm7, B<sup>b</sup>, E<sup>b</sup>, B<sup>b</sup>/d, Cm7, F7, A<sup>b</sup>, and G7.

G<sup>7</sup>/b Cm Fm<sup>7</sup>  
 D<sup>o</sup> 2. gang til (C) 3. + 4. + 5. + 6. A<sup>b</sup> G<sup>7</sup> Til (B) (C) Fm<sup>7</sup> E<sup>b</sup>Δ  
 B<sup>o</sup> Cm<sup>7</sup> Fm<sup>7</sup> E<sup>b</sup>Δ G<sup>7</sup> D.S. al  $\emptyset$   
 (Outro)  $\emptyset$  Cm<sup>7</sup> Fm<sup>7</sup> B<sup>b</sup> E<sup>b</sup> B<sup>b</sup>/d Cm<sup>7</sup> Fm<sup>7</sup> B<sup>b</sup> E<sup>b</sup> B<sup>b</sup>/d  
 Cm<sup>7</sup> Fm<sup>7</sup> B<sup>b</sup> E<sup>b</sup> B<sup>b</sup>/d Cm<sup>7</sup> F<sup>7</sup> A<sup>b</sup> G<sup>7</sup>  
 Cm<sup>7</sup> Fm<sup>7</sup> B<sup>b</sup>7 E<sup>b</sup>

Musik og tekst: Copyright © Valentine Valentine/  
 BMG Songs Inc/February Twenty Second Music/  
 Careers-BMG Music Publishing Inc/BMG Music  
 Publishing Scandinavia AB

# This Love

Bas

Intro G<sup>7</sup>/b Cm Fm<sup>7</sup>

D<sup>°</sup> (A) G<sup>7</sup>/b Cm

Fm<sup>7</sup> D<sup>°</sup> G<sup>7</sup>/b

Cm Fm<sup>7</sup> D<sup>°</sup>

(B) C<sup>m</sup>7 Fm<sup>7</sup> B<sup>b</sup> E<sup>b</sup> B<sup>b</sup>/d C<sup>m</sup>7 Fm<sup>7</sup>

B<sup>b</sup> E<sup>b</sup> B<sup>b</sup>/d C<sup>m</sup>7 Fm<sup>7</sup> B<sup>b</sup> E<sup>b</sup> B<sup>b</sup>/d

Cm<sup>7</sup> F<sup>7</sup> 1. + 2. A<sup>b</sup> G<sup>7</sup> /b

Cm Fm<sup>7</sup> D<sup>°</sup> 2. gang til (C)

3. + 4. + 5. + 6. A<sup>b</sup> Til (B) (C) G<sup>7</sup> Sidste gang til Fm<sup>7</sup> E<sup>b</sup>Δ

B<sup>°</sup> Cm<sup>7</sup> Fm<sup>7</sup>

# This Love

$E^b\Delta$   $G^7$  *D.S. al  $\Phi$*

(Intro)  $\Phi$   $Cm^7$   $Fm^7$   $B^b$   $E^b$   $B^b/d$   $Cm^7$   $Fm^7$

$B^b$   $E^b$   $B^b/d$   $Cm^7$   $Fm^7$   $B^b$   $E^b$   $B^b/d$

$Cm^7$   $F^7$   $A^b$   $G^7$

2

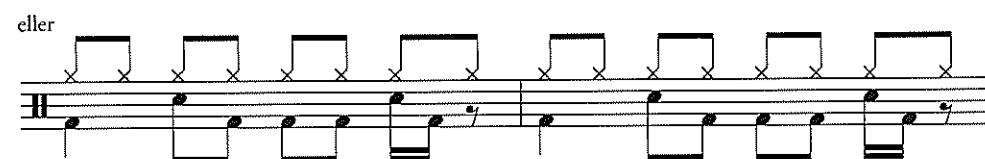
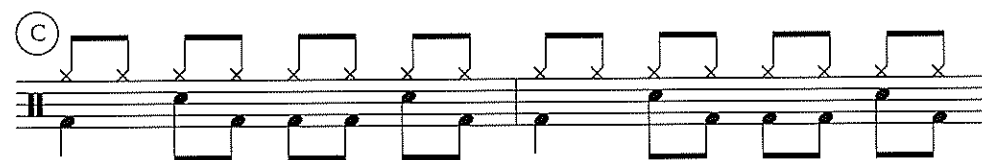
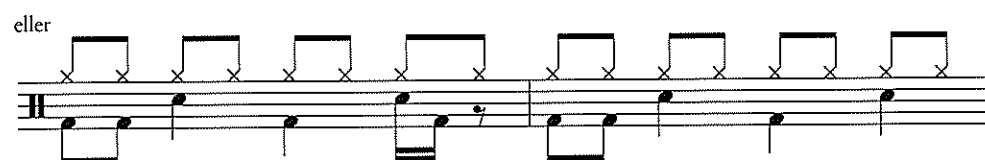
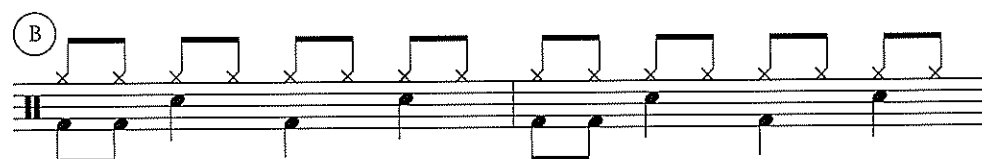
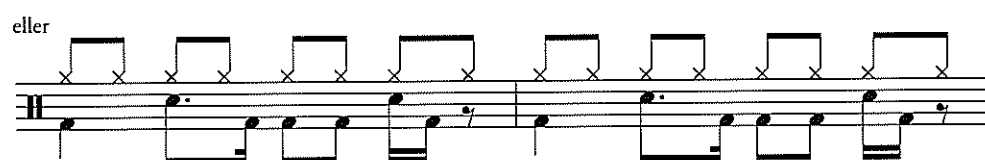
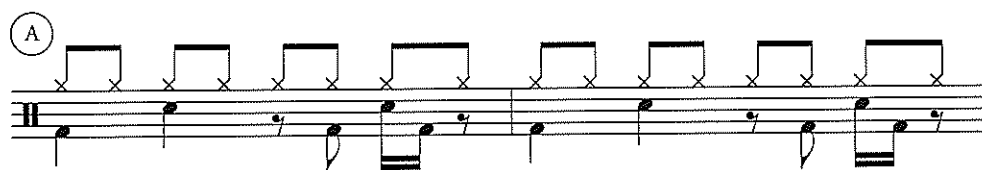
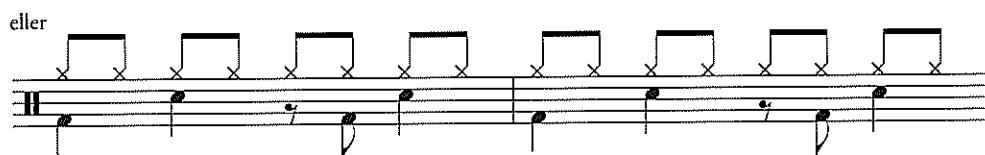
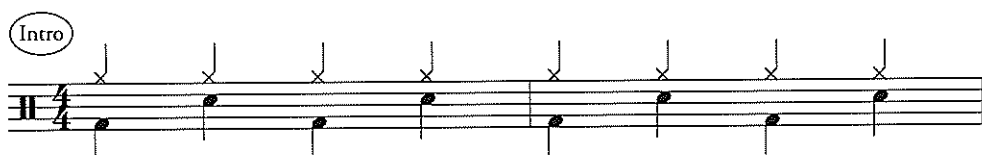
Musik og tekst: Copyright © Valentine Valentine/BMG Songs Inc/February  
 Twenty Second Music/Careers-BMG Music Publishing Inc/  
 BMG Music Publishing Scandinavia AB

## Form

Intro (A) vers 1 (B) omkvæd (A) vers 2 (B) omkvæd (C)  
 (B) omkvæd (B) omkvæd (B) omkvæd (B) omkvæd Outro

# This Love

Trommer



## Akkordskema

**Intro** ||: G<sup>7</sup>/b | Cm | Fm<sup>7</sup> | D<sup>0</sup> :||

**(A)** ||: G<sup>7</sup>/b | Cm | Fm<sup>7</sup> | D<sup>0</sup> |  
 | G<sup>7</sup>/b | Cm | Fm<sup>7</sup> | D<sup>0</sup> ||

**(B)** <sup>%</sup> || Cm<sup>7</sup> Fm<sup>7</sup> | B<sup>b</sup> E<sup>b</sup>B<sup>b</sup>/d | Cm<sup>7</sup> Fm<sup>7</sup> | B<sup>b</sup> E<sup>b</sup>B<sup>b</sup>/d |  
 | Cm<sup>7</sup> Fm<sup>7</sup> | B<sup>b</sup> E<sup>b</sup>B<sup>b</sup>/d | Cm<sup>7</sup> F<sup>7</sup> | <sup>1.,2.</sup> A<sup>b</sup> G<sup>7</sup> |  
 | G<sup>7</sup>/b | Cm | Fm<sup>7</sup> | D<sup>0</sup> :|| 2. gang til **(C)**

<sup>3.-6.</sup> A<sup>b</sup> G<sup>7</sup> || <sup>Til **(B)**</sup> Sidste gang til <sup>⊕</sup>

**(C)** || Fm<sup>7</sup> | E<sup>b</sup>Δ | B<sup>0</sup> | Cm<sup>7</sup> |  
 | Fm<sup>7</sup> | E<sup>b</sup>Δ | G<sup>7</sup> | / || D.S. al <sup>⊕</sup>

**Outro** <sup>⊕</sup> || Cm<sup>7</sup> Fm<sup>7</sup> | B<sup>b</sup> E<sup>b</sup>B<sup>b</sup>/d | Cm<sup>7</sup> Fm<sup>7</sup> | B<sup>b</sup> E<sup>b</sup>B<sup>b</sup>/d |  
 | Cm<sup>7</sup> Fm<sup>7</sup> | B<sup>b</sup> E<sup>b</sup>B<sup>b</sup>/d | Cm<sup>7</sup> F<sup>7</sup> | A<sup>b</sup> G<sup>7</sup> |  
 ||: Cm<sup>7</sup> Fm<sup>7</sup> | B<sup>b7</sup> E<sup>b</sup> :||

## Form

Intro : **(A)** vers 1 : **(B)** omkvæd : **(A)** vers 2 : **(B)** omkvæd : **(C)****(B)** omkvæd : **(B)** omkvæd : **(B)** omkvæd : **(B)** omkvæd : Outro